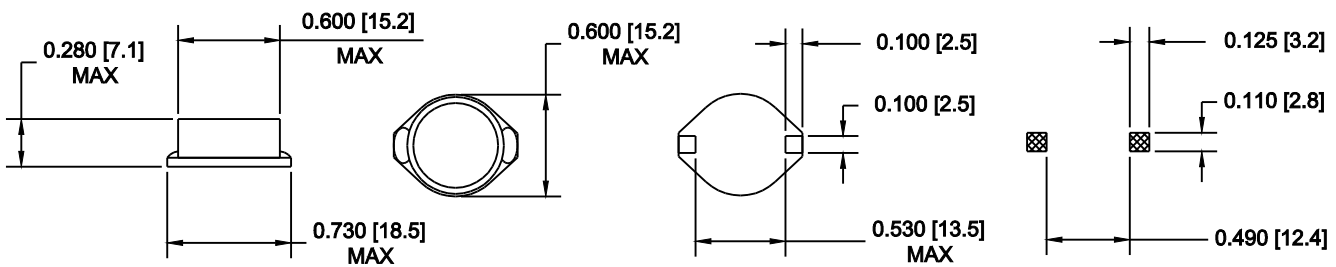


## 623 SERIES SURFACE MOUNT POWER INDUCTORS

## 5022 Size

- Ferrite Bobbin/Drum core.
- High Current capacity.
- Compact dimensions.
- Very stable inductance over current range.
- Ideal for Reflow Soldering.
- Tape and reel standard packaging.\*
- Low resistance and high energy storage.
- Shielded

### PCB Layout



PART NUMBER	INDUCTANCE ( $\mu$ H) +/-20%	RATED CURRENT (A)	DCR ( $\Omega$ ) max.	SRF (MHz) typ.
623-5022-100M	10.0	4.00	0.030	20.0
623-5022-150M	15.0	3.60	0.035	17.0
623-5022-220M	22.0	3.15	0.045	15.0
623-5022-330M	33.0	2.80	0.060	10.0
623-5022-470M	47.0	2.45	0.080	8.5
623-5022-680M	68.0	2.00	0.115	6.5
623-5022-101M	100.0	1.70	0.180	5.5
623-5022-151M	150.0	1.35	0.220	5.0
623-5022-221M	220.0	1.15	0.320	4.0
623-5022-331M	330.0	0.90	0.500	3.0
623-5022-471M	470.0	0.75	0.750	2.5
623-5022-681M	680.0	0.65	1.100	2.3
623-5022-102M	1000.0	0.55	1.500	1.9

- Notes:
1. Inductance is tested at 100KHz using an HP4284A LCR meter.
  2. DCR is measured using an HP4338A Milliohm meter
  3. SRF is measured using an HP3577A Network analyzer

- Reel contains 250 pcs on a 13" reel.