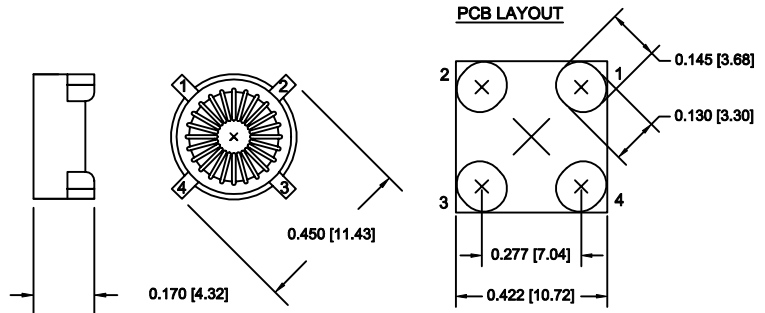


- 518 series utilizes an iron powder core; ideal for frequency applications up to 100 kHz.
- 618 series utilizes a Kool Mu[®] core; minimizing core losses and temperature rise at higher frequencies of 100-250 kHz.
- Tape and reel packaging.
- Listed are standard designs. Custom designs are available in this package.



518 Series Toroids With Iron Powder Cores and 01 Case Size

MODEL NUMBER	PARALLEL				SERIES				CIRCUIT DIAGRAM
	OPEN CIRCUIT INDUCTANCE +/-20% μ H	MINIMUM FULL LOAD INDUCTANCE μ H	FULL LOAD CURRENT A dc	MAXIMUM DC RESISTANCE Ohms	OPEN CIRCUIT INDUCTANCE +/-20% μ H	MINIMUM FULL LOAD INDUCTANCE μ H	FULL LOAD CURRENT A dc	MAXIMUM DC RESISTANCE Ohms	
518-R47M-01	0.42	0.35	5.50	0.006	1.68	1.40	2.75	0.024	
518-R68M-01	0.56	0.47	5.10	0.007	2.27	1.80	2.55	0.026	
518-1R0M-01	1.16	0.73	4.50	0.008	4.46	2.92	2.25	0.032	
518-2R0M-01	2.61	1.59	3.40	0.014	10.44	5.30	1.70	0.055	
518-5R0M-01	5.11	3.36	2.00	0.040	20.46	13.44	1.00	0.160	
518-8R0M-01	8.45	5.30	1.80	0.053	33.82	21.20	0.90	0.210	
518-100M-01	9.75	6.22	1.70	0.056	39.00	24.88	0.85	0.224	
518-150M-01	15.80	9.60	1.40	0.088	63.52	38.40	0.70	0.350	
518-200M-01	21.44	14.10	1.00	0.160	83.57	56.40	0.50	0.640	
518-250M-01	26.72	17.10	0.96	0.175	106.90	68.40	0.48	0.700	
518-330M-01	33.82	22.30	0.83	0.252	135.30	89.18	0.40	1.008	
518-500M-01	52.07	33.60	0.70	0.315	208.28	134.40	0.35	1.280	
518-680M-01	68.77	43.60	0.66	0.375	275.10	174.40	0.33	1.500	
518-101M-01	100.32	63.70	0.54	0.558	401.31	254.75	0.27	2.232	
518-151M-01	153.41	96.70	0.44	0.845	613.64	386.78	0.22	3.380	
518-201M-01	205.19	130.90	0.36	1.210	820.76	523.60	0.18	4.840	
518-301M-01	308.20	191.10	0.32	1.530	1232.80	760.40	0.16	6.120	

618 Series Toroids With Kool Mu[®] Cores and 01 Case Size

MODEL NUMBER	PARALLEL				SERIES				CIRCUIT DIAGRAM
	OPEN CIRCUIT INDUCTANCE +/-20% μ H	MINIMUM FULL LOAD INDUCTANCE μ H	FULL LOAD CURRENT A dc	MAXIMUM DC RESISTANCE Ohms	OPEN CIRCUIT INDUCTANCE +/-20% μ H	MINIMUM FULL LOAD INDUCTANCE μ H	FULL LOAD CURRENT A dc	MAXIMUM DC RESISTANCE Ohms	
618-R47M-01	0.40	0.26	5.50	0.005	1.60	1.06	2.75	0.019	SAME AS ABOVE
618-R68M-01	0.63	0.40	4.50	0.006	2.50	1.60	2.25	0.024	
618-1R0M-01	0.90	0.57	4.20	0.007	3.60	2.24	2.10	0.028	
618-2R0M-01	2.00	1.00	4.10	0.011	8.00	4.00	2.05	0.042	
618-5R0M-01	4.90	2.65	2.30	0.030	19.60	10.60	1.15	0.120	
618-8R0M-01	8.10	4.10	2.00	0.040	32.40	16.40	1.00	0.160	
618-100M-01	10.00	4.85	1.90	0.045	40.00	19.39	0.95	0.178	
618-150M-01	16.63	9.40	1.10	0.082	62.52	37.60	0.55	0.322	
618-200M-01	19.60	11.52	1.00	0.145	78.40	46.08	0.50	0.580	
618-250M-01	25.60	16.35	0.74	0.165	102.40	65.40	0.37	0.660	
618-330M-01	32.40	19.85	0.72	0.292	129.60	79.40	0.36	1.168	
618-500M-01	50.63	29.35	0.64	0.365	202.52	117.36	0.32	1.460	
618-680M-01	67.60	39.72	0.54	0.515	270.40	158.87	0.27	2.060	
618-101M-01	99.23	58.70	0.44	0.782	396.92	234.80	0.22	3.128	
618-151M-01	152.10	87.30	0.38	0.965	608.40	349.20	0.19	3.860	
618-201M-01	202.50	107.35	0.37	1.140	810.00	430.60	0.19	4.560	
618-301M-01	302.50	191.40	0.22	1.430	1210.00	765.60	0.11	5.720	

Kool Mu[®] is a registered trade mark of Magnetics, Inc.