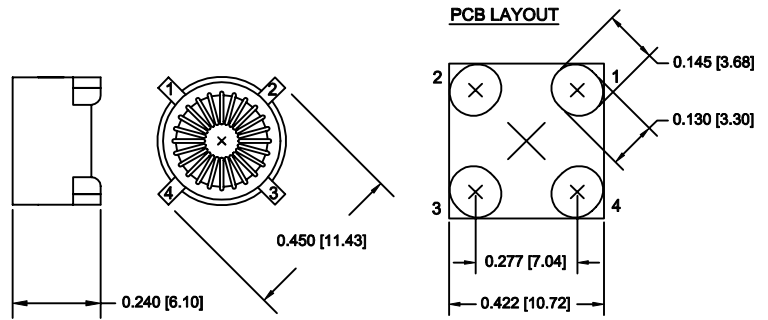


- 518 series utilizes an iron powder core; ideal for frequency applications up to 100 kHz.
- 618 series utilizes a Kool Mu® core; minimizing core losses and temperature rise at higher frequencies of 100-250 kHz.
- Tape and reel packaging.
- Listed are standard designs. Custom designs are available in this package.



### 518 Series Toroids With Iron Powder Cores and 02 Case Size

MODEL NUMBER	PARALLEL				SERIES				CIRCUIT DIAGRAM
	OPEN CIRCUIT INDUCTANCE +/-20% $\mu$ H	MINIMUM FULL LOAD INDUCTANCE $\mu$ H	FULL LOAD CURRENT A dc	MAXIMUM DC RESISTANCE Ohms	OPEN CIRCUIT INDUCTANCE +/-20% $\mu$ H	MINIMUM FULL LOAD INDUCTANCE $\mu$ H	FULL LOAD CURRENT A dc	MAXIMUM DC RESISTANCE Ohms	
518-R47M-02	0.57	0.73	5.90	0.006	2.26	1.70	2.95	0.024	
518-R68M-02	0.83	0.63	5.40	0.008	3.34	2.52	2.70	0.030	
518-1R0M-02	1.13	0.85	5.00	0.009	4.52	3.40	2.50	0.035	
518-2R0M-02	2.30	1.60	3.90	0.013	9.18	6.38	1.95	0.055	
518-5R0M-02	5.18	3.75	2.50	0.030	20.72	14.80	1.25	0.126	
518-8R0M-02	8.30	5.70	2.30	0.040	33.20	22.60	1.15	0.160	
518-100M-02	10.14	6.90	2.10	0.460	40.55	27.50	1.05	0.181	
518-150M-02	15.50	10.80	1.60	0.082	62.00	43.20	0.80	0.330	
518-200M-02	20.70	13.45	1.50	0.095	82.60	53.60	0.75	0.380	
518-250M-02	25.05	16.70	1.40	0.108	100.20	66.70	0.70	0.434	
518-330M-02	33.21	21.50	1.30	0.125	132.80	85.80	0.65	0.500	
518-500M-02	50.81	36.40	0.82	0.305	203.25	145.50	0.41	1.220	
518-680M-02	67.07	46.70	0.76	0.362	268.28	186.70	0.38	1.448	
518-101M-02	100.18	70.00	0.62	0.540	400.72	280.00	0.31	2.160	
518-151M-02	150.90	101.80	0.56	0.666	603.60	407.00	0.28	2.660	
518-201M-02	203.20	139.00	0.46	0.950	812.80	555.50	0.23	3.800	
518-301M-02	304.17	199.70	0.42	1.175	1216.65	798.50	0.21	4.702	

### 618 Series Toroids With Kool Mu® Cores and 02 Case Size

MODEL NUMBER	PARALLEL				SERIES				CIRCUIT DIAGRAM
	OPEN CIRCUIT INDUCTANCE +/-20% $\mu$ H	MINIMUM FULL LOAD INDUCTANCE $\mu$ H	FULL LOAD CURRENT A dc	MAXIMUM DC RESISTANCE Ohms	OPEN CIRCUIT INDUCTANCE +/-20% $\mu$ H	MINIMUM FULL LOAD INDUCTANCE $\mu$ H	FULL LOAD CURRENT A dc	MAXIMUM DC RESISTANCE Ohms	
618-R47M-02	0.45	0.30	6.50	0.005	1.80	1.18	3.25	0.019	SAME AS ABOVE
618-R68M-02	0.80	0.52	5.50	0.006	3.20	2.07	2.75	0.024	
618-1R0M-02	1.25	0.80	4.60	0.008	5.00	3.10	2.30	0.030	
618-2R0M-02	2.45	1.30	4.50	0.010	9.80	5.20	2.25	0.038	
618-5R0M-02	5.00	2.80	3.00	0.021	20.00	11.20	1.50	0.084	
618-8R0M-02	8.45	4.40	2.60	0.027	33.80	17.60	1.30	0.107	
618-100M-02	9.80	4.90	2.50	0.030	39.20	19.60	1.25	0.120	
618-150M-02	14.45	8.10	1.70	0.058	57.80	32.40	0.85	0.238	
618-200M-02	20.00	11.94	1.30	0.106	80.00	47.80	0.65	0.424	
618-250M-02	24.20	15.65	1.00	0.116	96.80	62.60	0.50	0.464	
618-330M-02	31.25	14.84	1.40	0.107	125.00	59.36	0.70	0.428	
618-500M-02	51.20	28.80	0.92	0.212	204.80	115.20	0.46	0.848	
618-680M-02	68.45	39.00	0.78	0.302	273.80	156.00	0.39	1.208	
618-101M-02	101.25	58.40	0.63	0.460	405.00	233.60	0.32	1.840	
618-151M-02	151.25	95.90	0.43	0.560	605.00	383.60	0.22	2.240	
618-201M-02	198.45	122.85	0.39	0.795	793.80	491.40	0.20	3.180	
618-301M-02	304.20	170.90	0.38	1.225	1216.8	683.60	0.19	4.900	

Kool Mu® is a registered trade mark of Magnetics, Inc.