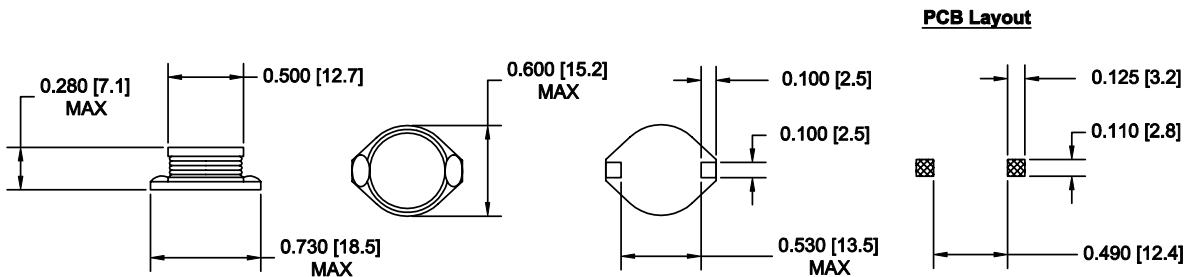


Surface Mount Power Inductors

523 SERIES SURFACE MOUNT POWER INDUCTORS

5022 Size

- Ferrite Bobbin/Drum core.
- High Current capacity.
- Compact dimensions.
- Very stable inductance over current range.
- Ideal for Reflow Soldering.
- Tape and reel standard packaging.*
- Low resistance and high energy storage.



PART NUMBER	INDUCTANCE (μ H) +/-20%	RATED CURRENT (A)	DCR (Ω) max.	SRF (MHz) typ.
523-5022-1R0M	1.0	8.60	0.009	80.0
523-5022-2R2M	2.2	7.10	0.014	80.0
523-5022-3R3M	3.3	6.20	0.018	60.0
523-5022-5R6M	5.6	5.30	0.020	40.0
523-5022-100M	10.0	4.30	0.031	30.0
523-5022-150M	15.0	4.00	0.036	22.0
523-5022-220M	22.0	3.50	0.047	20.0
523-5022-330M	33.0	3.00	0.066	15.0
523-5022-470M	47.0	2.60	0.086	9.0
523-5022-680M	68.0	2.30	0.130	8.0
523-5022-101M	100.0	1.80	0.190	7.0
523-5022-151M	150.0	1.50	0.250	6.0
523-5022-221M	220.0	1.20	0.380	5.0
523-5022-331M	330.0	1.00	0.560	4.0
523-5022-471M	470.0	0.82	0.850	3.0
523-5022-681M	680.0	0.72	1.100	2.5
523-5022-102M	1000.0	0.56	1.800	2.0

- Notes: 1. Inductance is tested at 100KHz using an HP4284A LCR meter.
 2. DCR is measured using an HP4338A Milliohm meter
 3. SRF is measured using an HP3577A Network analyzer

* Reel contains 250 pcs on a 13" reel.